

BLOOMFIELD FIRE & RESCUE

501 S. WEST ST. | BLOOMFIELD IA 52537

Station: 641.664.1147 | Email: blfdfire@netins.net



Jeff McClure, Fire Chief

Cell: 641.208.0269

Green Machine Project:

The Bloomfield Fire and Rescue is seeking funding for the purchase of a Green Machine. *(See Attached Brochure).*

With today's constant price increases on firefighting equipment and waiting times for delivery it is imperative to maintain and try to repair, when possible, already current inventories of equipment.

Fire Hose is no exception. Current Fire hose prices are increasing at a rate a 13% per semiannually with current lead time of up to 6 to 9 months delivery.

Recently the Bloomfield Fire and Rescue went to repair several rolls of our broken fire hose only to find out our current hand hose repair machine was broke, we traveled to Wapello Rural to have this Fire Hose Repaired and their machine was broke, so we moved on to City of Ottumwa who also had hose repair machine problems. Between the three stations we were able to put together enough parts on one machine to repair our fire hose.

Discussions began on how these three departments could help each other with this issue. It discussed that it would make sense if one department purchased a good reliable hose repair machine and the other departments would bring their broken hose to them for repair. The Department making the repairs would be charge for the equipment used and a small labor charge.

Bloomfield Fire contacted Sandry Fire for the price quote a Green Machine Hose Repair Machine and the attachments needed to repair 1inch hose, 1 ¾ inch hose, and 2 ½ inch hose. Initial price quote was \$19,183 for the machine and the attachments. As of 2-7-2023 I contacted Sandry Fire a current Price quote, the new price quote was actually reduced to the amount of \$17,052.00, this price is good for thirty days. *(Expires 3-28-2023).* Lead time for delivery of this machine would be 8 weeks.

The Bloomfield Fire and Rescue is asking for \$20,000 this price would include the Quoted Machine with attachments, delivery, installation and initial start-up fittings.

BLOOMFIELD FIRE & RESCUE

501 S. WEST ST. | BLOOMFIELD IA 52537

Station: 641.664.1147 | Email: blfdfire@netins.net



Jeff McClure, Fire Chief

Cell: 641.208.0269

The funding plan for this machine would be the following:

City of Ottumwa - \$2500 Committed and Invoiced for the funds

City of Bloomfield - \$2500

Townships of Bloomfield Fire - \$2500

Friends of the Bloomfield Fire Dept. \$2500

COVID Funds- \$10,000

Upon installation of the Green Machine and shortly there after we would advertise to surrounding Fire Departments that we have the hose repair service and created a small income flow for the Fire Department to offset continuous rising costs.

Bloomfield Fire and Rescue is asking for permission from the Bloomfield City Council to move on this project.

Jeff McClure

Bloomfield Fire Chief.



Quote
EST-015532

Sandry Fire Supply LLC
618 6th Street
DeWitt, Iowa 52742
U.S.A
5636592357

Bill To
Bloomfield, IA FD
501 S West St
Bloomfield, IA 52537

Estimate Date : 02/08/23
Expiry Date : 03/08/23
Reference# : Hose Machine
Sales person : John Crouch

#	Item & Description	Qty	Rate	Amount
1	ac920B-220-S Model 920 Expansion Machine W/ Foot Pedal	1.00	14,237.00	14,237.00
2	ac1"EXPAN Expansion Unit Assembly-Complete	1.00	629.00	629.00
3	ac1-1/2"EXPAN Expansion Unit Assembly-Complete	1.00	697.00	697.00
4	ac1-3/4"EXPAN Expansion Unit Assembly-Complete	1.00	685.00	685.00
5	ac2-1/2"EXPAN Expansion Unit Assembly-Complete	1.00	804.00	804.00
			Sub Total	17,052.00
			Total	\$17,052.00

Notes

Looking forward to earning your business.

Terms & Conditions

Shipping and Handling are not included in the above pricing

New Quote



Quote

EST-013869

Sandry Fire Supply LLC

618 6th Street
DeWitt, Iowa 52742
U.S.A
5636592357

Estimate Date : 08/26/22

Expiry Date : 09/23/22

Reference# : Hose Machine

Sales person : John Crouch

Bill To

Bloomfield, IA FD
501 S West St
Bloomfield, IA 52537

#	Item & Description	Qty	Rate	Amount
1	ac920B-220-S Model 920 Expansion Machine W/ Foot Pedal	1.00	16,017.00	16,017.00
2	ac1"EXPAN Expansion Unit Assembly-Complete	1.00	707.00	707.00
3	ac1-1/2"EXPAN Expansion Unit Assembly-Complete	1.00	784.00	784.00
4	ac1-3/4"EXPAN Expansion Unit Assembly-Complete	1.00	770.00	770.00
5	ac2-1/2"EXPAN Expansion Unit Assembly-Complete	1.00	905.00	905.00
			Sub Total	19,183.00
			Total	\$19,183.00

Notes

Looking forward to earning your business.

Terms & Conditions

Shipping and Handling are not included in the above pricing

Old Quote



CATALOG PRODUCTS
INFORMATION JOB OPPORTUNITIES
CONTACT

THE GREEN MACHINE

[<<Back To Coupling Machines](#)

THE GREEN MACHINE

PRODUCT DETAILS:

920 Series includes the following features:

The Green Machine — Action Coupling



View the Green Machine Video

- Floor model, 2 HP single or three phase motor
- Hi/Low pump for high speed approach, low speed expand
- Quiet operation
- Two-way controls (left and right hand) with foot pedal optional
- Expansion units designed so segment holders cannot be expanded when properly set up
- Cylinder 4" bore
- **With or Without** Foot Pedal

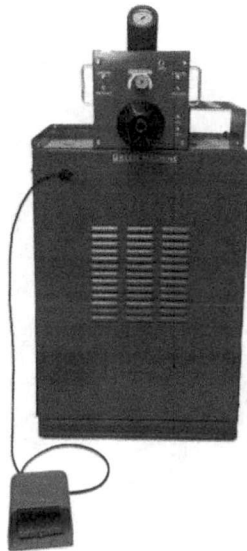
920 SERIES WITH FOOT PEDAL

PART #	VOLTS/PHASE
MODEL 920B-220-5	220V-Single Phase
MODEL 920B-220-3	220-V-3 Phase
MODEL 920B-440-3	440V-3 Phase

920 SERIES WITHOUT FOOT PEDAL

PART#	VOLTS/PHASE
MODEL 920A-220-5	220V-Single Phase
MODEL 920A-220-3	220-V-3 Phase
MODEL 920A-440-3	440V-3 Phase

[DOWNLOAD 920 MANUAL](#)



930 Super Series is designed for continuous duty (includes same features

The Green Machine — Action Coupling

as 920 series, with the following upgrades):

- 3 HP motor
- Forced air oil cooler and auto fan
- Three-way controls (left and right hand and foot controls)
- Cylinder 5" bore

930 Series

PART#	VOLTS/PHASE
MODEL 930A-220-3	220 Volts- 3 Phase
MODEL 930A-440-3	440 Volts- 3 Phase

[DOWNLOAD 930 MANUAL](#)

LOCATION

Action Coupling &
Equipment, Inc.
8248 County Road 245
P.O. Box 99
Holmesville, Ohio 44633

NEED ASSISTANCE?

PHONE: 330-279-4242
TOLL FREE: 1-800-327-2779
info@actioncoupling.com

HOURS

Monday — Friday
8:00am —
5:00pm
©2021 Action
Coupling